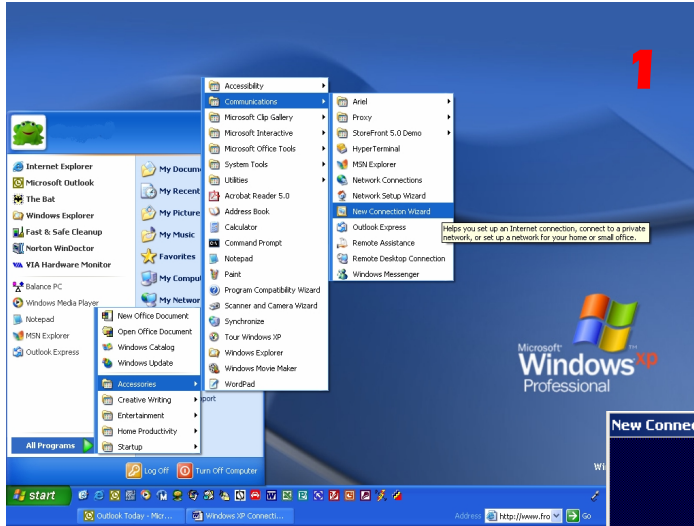


Internet Connection Configuration Instructions

For assistance with configuring your system to access GOIN or other internet related topics call us Toll Free at **888.680.4646** or 683-4951 in Ava or 741-7204 in Hartville. Technical Support is available 7 days a week from 8:30 am to 11:00 pm. <http://www.getgoin.net/support>

Windows XP Configuration

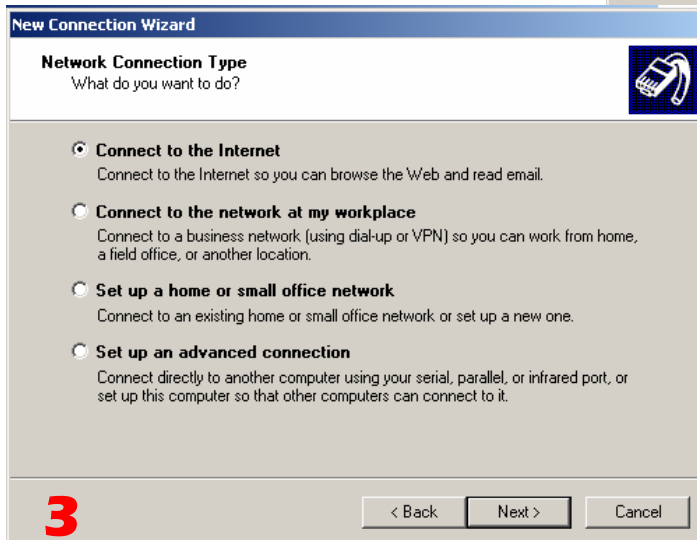


- Click Start
- All Programs
- Accessories
- Communications
- New Connection Wizard

- You will then see the Welcome Screen. Simply click NEXT to begin.



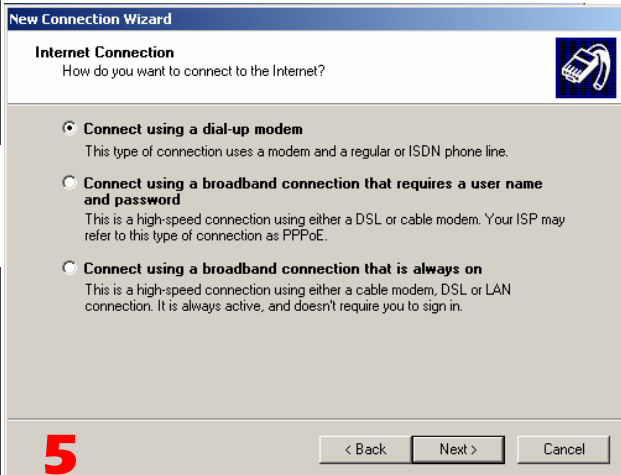
- You will choose Connect to the Internet to set up your dial up access to GOIN.
- Click NEXT.



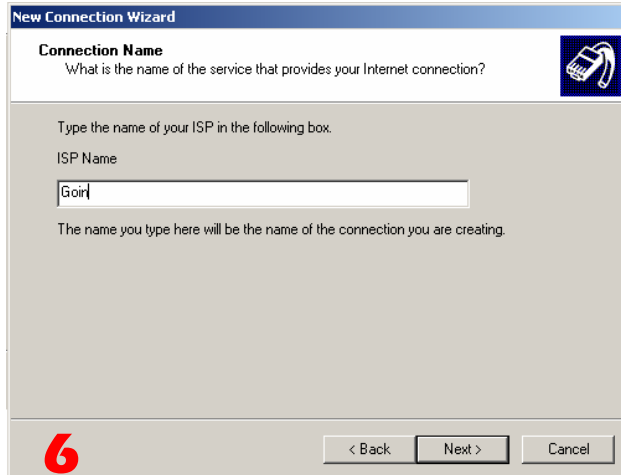


- Since you already have a Service Provider, choose Set up my connection manually.
- Click NEXT.

- Choose Connect using a dial-up modem on this screen.



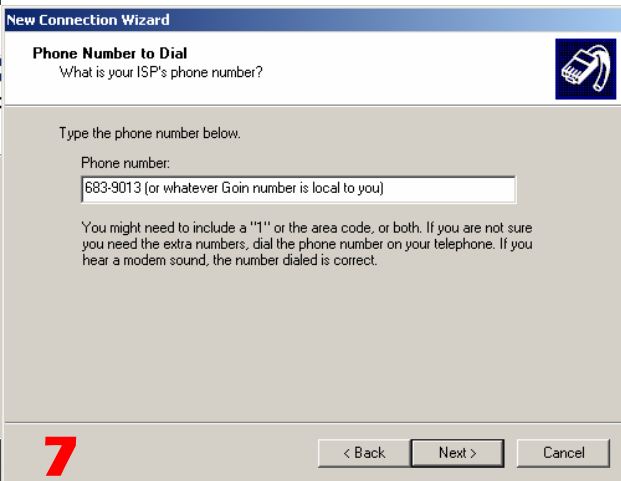
- GOIN is the name of your ISP. Enter GOIN
- Click NEXT



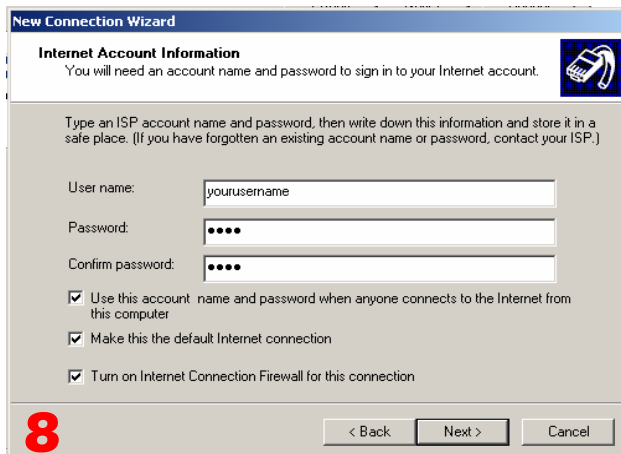
- Enter the number that is local to you
- Click NEXT

Ava	683-9013	Caulfield	679-2289
Dora	679-2289	Gainesville	679-2289
Grovespring	741-7930	Hartville	741-7930
Manes	741-7930	Mansfield	924-4110
Mtn Grove	926-0100	Norwood	746-8119
Theodosia	679-2289	Vanzant	948-0444
Wasola	679-2289	Willow Springs	469-1650

* Call GOIN for Nationwide Numbers



- Type your username you chose when you signed up. Please type it in lowercase only,
- Enter your password in lowercase. You will need to enter your password again to confirm it. Also leave a checkmark in all three boxes underneath your username and password.
- Click NEXT.





Congratulations! Click Finish and you are done setting up your dial-up connection.

Outlook Express Configuration

- Click on Start
- Open Outlook Express
- Click on Tools, Then Accounts
- Click on Add, Then Chose Mail
- The screen will say 'Display Name' Enter the Name you want to appear when you send messages from this account.
- Click NEXT
- Enter your email address example: user@getgoin.net
- Click NEXT
- My incoming mail server is a **POP3**
- In the line that says Incoming mail type **pop3.getgoin.net**
- In the line that says Outgoing mail type **smtp.getgoin.net**
- Click NEXT
- Enter your password (DO NOT PUT A CHECK IN LOGON USING SECURE PASSWORD AUTHENTICATIOIN)
- Click NEXT
- Click FINISH

Windows 95,98 and ME Configuration

- Click START/Programs/ Accessories/ Communications/ Internet Connection Wizard
- Put the dot in the third circle that reads 'I wanted to set up my Internet Connection Manually'
- Click NEXT
- Put the dot by 'I connect using a phone line and a modem'
- Click NEXT
- Enter the phone number that is local to you (numbers are listed on page 2)
- Remove the check from the box that reads ' Connect using Area Code'
- Click NEXT
- Enter your username and password in lowercase letters
- Click NEXT
- The Screen will say Connection Name enter GOIN
- Click NEXT
- The screen will read 'Do you wish to set up a mail account now?' Chose YES
- Click NEXT
- Make sure the dot is next to 'Create a new Internet Mail Account'
- Click NEXT
- Proceed with the instructions highlighted in blue above.

**Do not hesitate to call your friendly support staff if you encounter any problems or questions at all.
888.680.4646**

